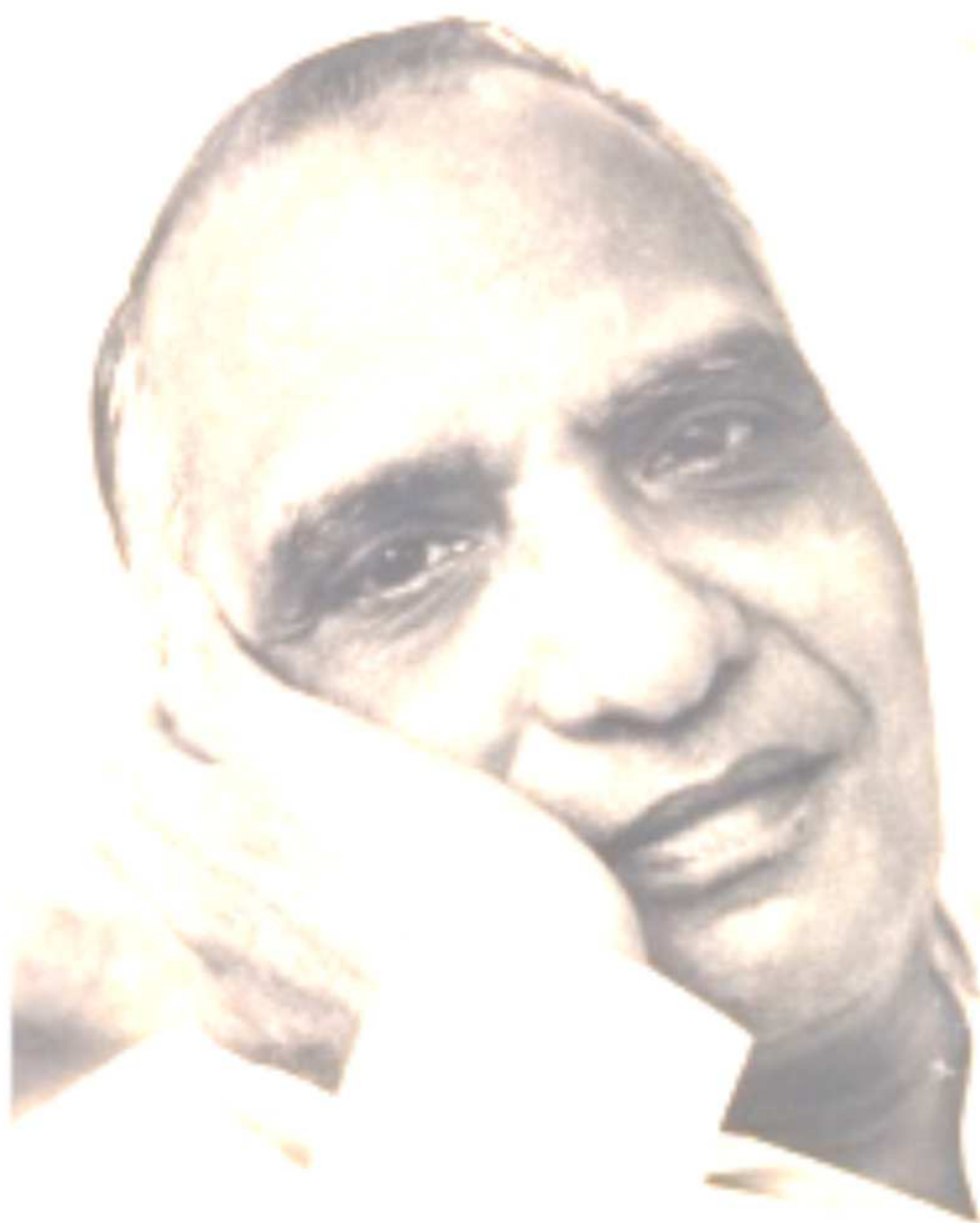


## EDUCATIONAL & SOCIAL WORK IN A FOREST DISTRICT



**FOUNDER CHAIRMAN OF KANARA WELFARE TRUST**



**Dr. DINKAR DESAI**  
**(1909 - 1982)**

## HOMAGE TO PAST OFFICE BEARERS



**Late Shri Vaman N Pai**  
**Trustee & Treasurer, KWT**  
(1929 - 2012)



**Late Prof. K G Naik**  
**Trustee & Secretary, KWT**  
(1932 – 2007)



**Late Prof. C N Shetty**  
**Administrative Officer, KWT**  
(1938 – 2006)



## KANARA WELFARE TRUST, ANKOLA – a brief profile

It was way back in 1953, that the Kanara Welfare Trust made a tryst with destiny. We are proud that Kanara Welfare Trust has completed 61 years of its useful and fruitful existence. Founder Chairman late Dr. Dinkar Desai wrote in one of his epigrams –

ನಡು ಹಗಲಿನಲ್ಲಿ ನನಗೆ ಬೀಳುವದು ಕನಸು  
ಈ ಕನಸಿನಿಂದ ಚಿಗುರುವದುಂಟು ಮನಸು  
ಒಂದೊಂದು ಚಿಗುರಿಗೂ ಒಂದೊಂದು ಶಾಲೆ  
ಮೂಡಿದರೆ ಶಾರದಾಂಬೆಗೆ ಪುಷ್ಪ ಮಾಲೆ

*“Right in the middle of the day, I dream  
and my mind gets inspired by the dream,  
Schools one after the other sprout from my dream  
Goddess Saraswati gets a garland comprising these  
Schools.”*

The message of the Trust is very clear. Service is endless. Kanara Welfare Trust is nothing but humanism of Dr.Dinkar Desai personified. Thousands of beneficiaries of the Trust living in different places of the District and also outside look up to it with a deep sense of gratitude and wish.

Magnificent buildings, laboratories, libraries and beautiful gardens hold out a proof to the development and activities of the Trust. It should be remembered that the Trust is something more than a collection of bricks and stones. It is a living and growing organisation. Thousands of well-wishers, philanthropic donors, admirers and not to speak of countless beneficiaries constitute this mighty organisation.

By and large, Kanara Welfare Trust has been able to achieve what is contained in the preamble. Observing the manifold activities of the Trust, an eminent person exclaimed, “The Trust by its significant service has almost established a University in the District of North Kanara”. Today, the Trust has a network of Institutions all over the District. It has to its credit 45 Institutions – 3 Degree Colleges, 1 College of Education, 7 Junior Colleges, 17 High Schools and other Social Service Institutions. It was started with a meagre amount of Rs.6000/- collected by the Raith Community and now the assets are more than 15 crores excluding the land. The family of the Trust is growing day by day and there has been a significant increase in the number of students. Total enrolment is about 10000. All these have been possible because of the careful and judicious management of the Trust.

Saga of Kanara Welfare Trust is the saga of sacrifice of one individual – Dr. Dinkar Desai – who was our great torch bearer and lent us all help to keep this torch burning and spread the light in to the farthest corners of the District. Since the death of Dr. Desai in 1982, the present Chairman, Shri S.P.Kamat is contributing his mite to keep the torch bright and blazing aloft. He is ably assisted by the other Trustees. The Trust has been conducting fresh and feasible experiments in the welfare of the people of this district from time to time under his dynamic leadership.

## MAIN AIMS AND OBJECTS OF THE TRUST

- a. To carry out and promote educational, cultural, social and material advancement of the people, particularly of the backward and poorer classes, within the Uttar Kannada District.*
- b. To impart education and knowledge, especially by establishing and maintaining educational institutions and hostels, including Schools for imparting education in the District.*
- c. To do all such things as are incidental or conducive to the attainment of the above objects.*

## PRESENT OFFICE BEARERS OF THE TRUST

**Shri S.P.KAMAT**

**Chairman**



**Smt. USHA PRADHAN**

**Trustee**



**Shri G. V. BHAT**

**Trustee**



**Shri K.V.SHETTI**

**Administrative Officer**



## FROM THE CHAIRMAN'S DESK



Kanara Welfare Trust is indeed an institution with a difference. Being rooted in the rural background of Uttar Kannada District, it has to balance the aspirations of the rural people and the modern requirements. Education is no more and it should not be any more a mere acquisition of knowledge for eking out a livelihood. It has a deeper meaning and a loftier purpose. The formal curriculum prescribed needs to be blended with methods of arousing latent potentialities in the child, enabling it to realise its own strength. The wholesome development of the personality of a child leading it to higher levels of understanding should be the purpose of education.

Today, India needs to be imbued with a new dynamism which calls for young men and women to shed off the shackles of small ideas, small means, small pleasures and small aims and be motivated to think and achieve higher goals in every walk of life. Education is the instrument through which alone, this purpose could be achieved. This has been the motto of Kanara Welfare Trust.

Kanara Welfare Trust has completed 61 years of its existence. This institution is an expression of a creative thought that germinated in a creative mind in a state of contemplation. Though this creative mind appears to be always in a flux and agitation influenced by the apparent shortcomings and deficiencies in the external system, in its deeper recesses there lies a lofty ideal, and a thought focussed on the possibility of overcoming these deficiencies and shortcomings experienced by the superficial mind. Dr. Dinkar Desai's life is an example to show how the creativity within can find its expression to meet the challenges of a given time. The Trust which has its humble beginning has today grown into a magnificent institution cherishing its own ideals and principles, and, in the process of providing life sustaining strength to thousands of young boys and girls in the form of formal education. This is the contribution of late Dr. Dinkar Desai to nation-building in the correct perspective.

The role of the Trust in shaping the new generations fired by the spark of awareness of noble ideals has been great. The Trust has the ability and perseverance to carry out this great responsibility. The Trust has been conducting fresh, feasible experiments in the welfare of the rural development for six decades. We look forward to the whole hearted co-operation of the people and hope that the ceaseless endeavour of the Trust may bear myriads of fruits in the years to come.

## KANARA WELFARE TRUST – a saga of its architects



**Prof. G.V.Bhat**  
Trustee, KWT

When I reminisce my association with the Kanara Welfare Trust, I become nostalgic. I feel elated. It goes back to 1970, when late Dr. Dinkar Desai, the founder Chairman of Kanara Welfare Trust, who dedicated his life for the elevation of the poor and depressed classes by tenaciously adhering to the values of humanity, invited me to steer the newly opened Divekar College of Commerce at Karwar. I view the 23 years of my service as the Principal of the College as the golden period of my life. My ties with the Trust continued even after my retirement and strengthened further when I was nominated as the Trustee, post retirement.

The establishment of Kanara Welfare Trust was a deeply contemplated and well-thought move of Dr. Desai. It was amazing that he took up this venture in 1953, when democracy was still in its infant stage in the country. Certainly, it was a Herculean task with the limited resources at one's disposal. However, he accepted this challenge with courage and conviction and built a magnificent Institution.

The very memory of Dr. Desai reminds me of the following lines from Tagore's *Geetanjali*.

*"I slept and dreamt that life was joy  
I awoke and saw that life was service  
I acted and beheld that service was joy"*

True. Service was a joy for Dr. Desai. Kanara Welfare Trust was a candid expression of his selfless service. The emergence of Kanara Welfare Trust in the backward district of Uttara Kannada with its headquarters at Ankola also fulfilled the aspirations of Gopal Krishna Gokhale, the founder of Servants of India Society of which Dr. Desai was a life member, that the members of the Society should divert themselves to the underprivileged rural and tribal people to make them literate and healthy. Mahatma Gandhi once said that education is the most powerful weapon which you can use to change the world.

To quote Mahatma Gandhi again, "Education is an all-round drawing out of the best in child and man – body, mind and spirit". Dr. Desai too had belief in this dictum. He was of the firm view that education was the foundation on which architecture of social reforms could be built. Thus spreading education became the primary goal of the Trust. It penetrated into remote villages of

Uttar Kannada District, some of them rooted in the deep forest region, where even the Government did not ponder to venture, to open High Schools. The fact, that all these schools were named 'Janata Vidyalaya', only manifests Dr. Desai's yearning for a system of education with total involvement of the people at large. Significantly, the rural masses positively responded to the call given by Dr. Desai. Thus the first High School of the Trust, Kanara School, later renamed as People's Multipurpose High School, was built at Ankola with the support of the peasants of Ankola Taluk. Dr. Desai also introduced Rupee Reserve Fund, a novel scheme, to encourage the parents, the students and the Trust employees to participate in the development of the educational Institutions run by the Trust. This scheme allowed the contribution of just one rupee a year by the students and also employees of the concerned Institutions. Dr. Desai viewed that it was not the amount, but the participation of the students, parents and employees in the process of development of the Trust that was more important and necessary. Needless to say that this scheme too found an appeal with the people.

Dr. Desai's concern for the empowerment of women and also deprived class was evident, when the Trust opened Thakkar Bapa Seva Kendra through which tailoring schools, hostels and health centres in the backward areas of Mundgod, Haliyal, Bhatkal and Ankola were set up. He was of the firm opinion that masses needed political and social awareness to liberate themselves to function as active members of the society. This prompted the Trust to launch a Kannada weekly, '*Jana Sevak*' in 1954. The weekly which was rich in content, enriched Kannada Literature, acted as a watchdog of political administration and awakened the people against the ills of the society for almost seventeen years before its publication was stopped in 1972 due to financial crisis.

Opening of Gokhale Centenary College at Ankola was a milestone in the history of Kanara Welfare Trust. It was a boon for tribal *Halakki Vokkals*, dalits and farming community of Ankola Taluk for whom the higher education was a distant dream. In fact, the College changed the destiny of thousands of young boys and girls of these backward communities by unfolding immense opportunities for them to achieve life-sustaining strength. When the need for Commerce education was felt immensely at Karwar, the Trust came forward to fulfill the aspirations of the people of the town. Thus was born Divekar College of Commerce at Karwar. The Trust in course of time could build a network of 45 educational and social service Institutions including 4 Degree Colleges, 7 PU Colleges, 17 High Schools, 3 English Primary Schools, 2 Tailoring Schools, 3 Nursery Schools and 2 Music Schools. Today, they stand as testimony to Dr. Desai's sacrifice and selfless service. Dr. Desai was ably assisted by other Trustees including Late Shri Dayanand Nadkarni and Late Shri S.V.Pikle, initially. At a later stage, Dr.R.G.Kakade, a life member of Servants of India Society, Pune, was subsequently nominated as a Trustee. Late Shri V.V.Shetiya, a businessman and social worker, Late Prof. K.G.Naik, former Principal of G.C.College, Ankola, Late Shri Vaman Pai, a social worker, have given valuable contribution to the Trust as Trustees.

Dr. Desai was a poet by temperament. His creative mind was reflected in the uniform U-structure of the building in which the Schools and Colleges are housed, the beautiful garden in front of each School and College and its playground providing a congenial atmosphere for learning and teaching.



In fact, these Temples of Knowledge, which stand in unison with the Nature symbolize Dr. Desai's vision for sustained development.

I had the rare privilege and opportunity to serve under Dr. Desai for twelve long years. In fact, his virtues - integrity, honesty, selflessness, self-discipline, his planning things in advance, pursuing a cause with utmost devotion, singleness of purpose and concentrated efforts to achieve the goal - to name a few, had made great impact on me. He was out and out a democrat. He never interfered in the functioning of any School or College that the Trust managed. He gave a free hand in the administration to the Heads of these Institutions with utmost faith in them. What all he demonstrated was parental love and care to all the employees of the Trust. I believe that his noble example will continue to inspire the rising generations to follow.

The demise of Dr. Desai on 6<sup>th</sup> November 1982 created a void in the leadership of Kanara Welfare Trust. However, it was effectively filled by Shri S.P.Kamat. Although Dr. R.G.Kakade, a senior member of the Trust was then nominated as the Chairman of the Trust, Shri S.P.Kamat, a leading lawyer and Vice-Chairman of Kanara Welfare Trust was entrusted with the responsibility of leading the Trust since Dr. Kakade was stationed at Pune. Shri S.P.Kamat was elevated to the post of Chairman later on.

At present, besides Shri S.P.Kamat, the Chairman of Kanara Welfare Trust, Smt. Usha Pradhan and Prof. G.V.Bhat are the Trustees. Shri K.V.Shetti is the Administrative Officer of Kanara Welfare Trust.

Mr. Kamat, a legal luminary and a soft spoken upright gentleman with vast knowledge and high spiritual orientation, has continued the legacy of Dr. Desai, holding the ethos of the Trust high. The Trust has been making greater strides under his dynamic leadership. He possesses utmost patience and perseverance which are worth emulating. My experience with him tells that he is a friend, philosopher and guide in true sense. He has a progressive outlook. He motivates youngsters and others alike to be creative in thinking and deeds. He generates confidence among them. He is a great thinker and rationalist. As an educationist, Mr. Kamat wants the education system to kindle inquisitiveness among the children, identify and supplement a child's creativity and teach the child to reach its own mind and physical configuration and slowly expand that awareness to the things outside. A conversation with him can generate myriad positive feelings. I am always impressed by his thoughts and action. In fact, his very presence touches my emotional chord. I am confident that the Trust would attain greater heights in the years to follow under the leadership of Mr. Kamat.

Kanara Welfare Trust has completed sixty years of its fruitful existence in November 2013. One must admit with all humility that the employees of the Trust contributed immensely in shaping the Trust into a premier Institution of the district. However, the path of progress is never ending for any organization. There are miles and miles to go on this path. The people of this district had given unstinted support to the Trust in the past. I wish that the public will continue to join hands with the Trust in its nation building activities in future also.

**KANARA WELFARE TRUST – then and now**

**K.V.Shetti**  
**Adm. Officer, KWT**

It has been a long journey for Kanara Welfare Trust since its inception in 1953. Though started as an educational Institution to spread the seed of education among the rural populace, the Trust has transcended its boundaries and is now actively making strides in the field of primary health care and social welfare.

I have had the privilege of observing firsthand the efforts of the Trust's founder, Dr. Dinkar Desai, since I started my service in 1966 at Gokhale Centenary College, Ankola. A determined man, Dr.Desai left no stone unturned to create a network of schools & colleges across the length and breadth of this forest district of Uttar Kannada. He was ably supported by his fellow Trustees in this noble endeavour. The main aim at that time was to provide basic education to the masses at a time where there were no Govt. schools in the vicinity.

Kanara Welfare Trust has more than addressed the need of providing Primary, High School & College Education to the people of this district. Dr. Dinkar Desai's legacy has continued unabated. With the change at the helm of affairs, there has also been a subtle transformation in the activities of the Trust. Our present Chairman, Shri S.P.Kamat, has contributed immensely to take the Trust in a new direction. He has brought in new ideas and resources to facilitate novel projects and schemes which are being executed by the Trust. Through innovative schemes such as Project Change Makers for a Better Tomorrow, Lecture Series by eminent personalities, District Level Debate Competitions, Financial Assistance for Education, Mobile Health Care, etc. the Trust has been reaching out to the students and people in need from all strata of society. Under the able guidance and leadership of Shri S.P.Kamat, the Trust has established a name for itself on account of its transparency and ethical principles.

In the course of years, the Trust has made optimum use of its resources and modern technology. We have our own website ([www.kwtankola.com](http://www.kwtankola.com)) which is regularly updated and which provides information on the various activities of the Trust. All our Institutions are networked with the help of the Internet. Our Schools and Colleges are equipped with computers and audio-visual technology which aid in learning. Remedial coaching is provided to academically weaker students.

In-house refresher & orientation workshops are organized for the faculty and staff with expert resource persons in attendance. Annual Inspections are carried out to gauge the quality of education in all our Institutions and any shortfall is adequately addressed. A meeting of all the Heads of the Trust Institutions is organized every year to enable the Management and Institutions to interact with each other and chalk out the action plan for the year. Developmental activities, repairs & maintenance of existing facilities are promptly undertaken. Achievers among the faculty and student community are honoured timely.

I would like to thank the following individuals & organizations who have lent their support and strength to the Trust.

- Our Chairman, Shri S.P.Kamat, who also heads Kruger Foundation for Child Aid, Karwar, which has been sponsoring and supporting the many projects being executed by the Trust.
- Shri Devadatt Kamat, Advocate, Supreme Court, New Delhi, for instituting and sponsoring the P.S.Kamat Memorial District Level Inter-Collegiate Debate Competition and Lecture Series among other schemes.
- Our students, alumni and the parent community who have always supported us.
- Representatives of the people who have looked at the Trust with respect.
- Members of the School Betterment Committees who have been helpful in taking up developmental works in our Schools.
- Donors, philanthropists, well-wishers who have been supporting the Trust and its Institutions.
- All the resource persons who have addressed and participated in our programs.
- All the Heads of our Institutions, teachers and staff – working & retired, who have been part of our extended family.

I take this opportunity to express thanks and gratitude on behalf of the Trust to all the stakeholders who have been instrumental in our growth. What sprouted as a dream of Dr. Dinkar Desai has now metamorphosed into a beautiful poetry integrating education and social values. With your blessings and good wishes, Kanara Welfare Trust is sure to go a long way in transforming the young minds of Uttar Kannada.

## OUR INSTITUTIONS

Sl.No.	Name of the Institution	Place	Year Estd.
<b><u>DEGREE COLLEGES</u></b>			
1	Gokhale Centenary College	Ankola	1966
2	Divekar College Of Commerce	Karwar	1970
3	KWT's College of Education	Dandeli	2005
4	KWT's B.C.A. College	Karwar	2008
<b><u>JUNIOR COLLEGES</u></b>			
5	Gokhale Centenary Pre-University College	Ankola	2001
6	Divekar Pre-University Commerce College	Karwar	2001
7	Janata Vidyalaya Composite Junior College	Dandeli	1971
8	Janata Vidyalaya Composite Junior College	Kadtoka, Honnavar	1971
9	Janata Vidyalaya Composite Junior College	Shirali, Bhatkal	1982
10	P.M. Composite Junior College	Ankola	1993
11	Divekar Pre-University Science College	Karwar	2004
<b><u>HIGH SCHOOLS</u></b>			
12	People's Multipurpose High School	Ankola	1953
13	Janata Vidyalaya	Baad-Kagal, Kumta	1954
14	Janata Vidyalaya	Shirali, Bhatkal	1955
15	Janata Vidyalaya	Dandeli	1956
16	Janata Vidyalaya	Kadwad, Karwar	1960
17	Janata Vidyalaya	Kasarkod, Honnavar	1960
18	Janata Vidyalaya	Murdeshwar, Bhatkal	1960
19	Janata Vidyalaya	Mirjan-Kodkani, Kumta	1961
20	Janata Vidyalaya	Kadtoka, Honnavar	1962
21	Janata Vidyalaya	Mudga, Karwar	1963
22	Janata Vidyalaya	Dhadeshwar, Kumta	1964
23	Janata Vidyalaya	Bedkani, Siddapur	1965
24	Smt. Kamalabai Pikale High School	Katgal, Kumta	1966
25	Janata Vidyalaya	Anilgod, Honnavar	1966
26	Janata Vidyalaya	Kulve-Baroor, Sirsi	1968
27	People's Multipurpose High School (English Medium)	Ankola	2011
28	Dinkar English Medium High School	Dhadeshwar	2013
<b><u>PRIMARY AND PRE-PRIMARY SCHOOLS</u></b>			
29	English Medium Primary School	Dandeli	1958
30	English Medium Nursery School	Dandeli	1958
31	Bala Vikasa Kendra	Mundgod	1969
32	Kannada Medium Primary School	Dandeli	1999
33	Kannada Medium Nursery School	Dandeli	1999
34	Thakkar Bapa Nursery School	Ankola	2003
35	Dr. Dinkar Desai Primary School	Ankola	2004
36	Janata Vidyalaya Dinkar Pre-Primary School	Dhadeshwar, Kumta	2005
37	Dinkar Primary School	Dhadeshwar, Kumta	2006
38	Shrimat Sadyojat Shankarashram Swamiji Balamandir	Shirali, Bhatkal	2008
<b><u>OTHER SOCIAL SERVICE INSTITUTIONS</u></b>			
39	Thakkar Bapa Tailoring School	Ankola	1956
40	Anandashram Tailoring School	Mundgod	1969
41	Satyasai Balawadi & Balavikas Kendra	Kodibag, Karwar	1985
42	Dinkar Kalaniketan Music School	Ankola	1990
43	Dinkar Kalaniketan Music School	Karwar	1990
44	Computer Training Centre	Karwar	1998
45	Computer Training Centre	Dandeli	1998



## ACQUAINTING WITH THE KANARA WELFARE TRUST RUN INSTITUTIONS



**Dr. Dinkar Desai**, a multi faceted personality - an eminent poet in Kannada, a social worker par excellence and an eminent educationist came like a scourge on the scene of post independent Uttar Kannada District to drive away the illiteracy and ignorance of the people of our district. The intense feeling of empathy for the poor and downtrodden in him resulted in the establishment of the Kanara Welfare Trust in 1953 under the banner of which he founded educational institutions

throughout the length and breadth of our district. The Kanara Welfare Trust mainly focuses upon the qualitative basic education, especially in the arena of Primary and High School education. Discipline and high degree of transparency are the salient features of our Trust run institutions. The fact that these institutions are captioned “Janata Vidyalaya” being established with the co-operation of the rural folk speak volumes of Dr. Dinkar Desai’s organizing skill, his concern for the rural poor who were steeped in mire of wretched poverty in those days and also his conviction that only education can uplift them from the poverty and enable them to enjoy cake of the decent life. The simple structure of the tiled roof of the buildings of the educational institutions in all the rural areas of our district has become a metaphor for simplicity and an inseparable feature of our Uttar Kannada along with the scenic beauty of the hills, the Arabian sea and the cascading waterfalls reflecting the abundant pulchritude of Nature with which our district is surrounded. In this back drop we endeavour to acquaint you with Trust run institutions by providing brief articles about them.

### GOKHALE CENTENARY COLLEGE, ANKOLA

Established in June 1966, the birth centenary year of Gopal Krishna Gokhale, the College is aptly named after him. The College is permanently affiliated to Karnataka University, Dharwad. It has Arts, Science & Commerce faculties leading up to the final year degree courses.

The College has an independent building. Besides, it has a Canteen, an Indoor Games Hall, a Student Consumer Society, and an Administrative Wing. There are six staff quarters in the campus. There is also a Guest-House in the College campus.



The College has well-equipped laboratories in Physics, Chemistry, Botany and Zoology. It has a separate and spacious Library Building, named after Dadabhai Naoroji.

The College provides NCC and NSS training to students. In the University/Board examinations, the results of the College have been satisfactory. The College has to its credit many University Blues and rank holders. The College has been re-assessed by NAAC and accredited at the B-level with a CGPA score of 2.82.

### DIVEKAR COLLEGE OF COMMERCE, KARWAR

Divekar College of Commerce was established in the year 1970, thanks to the liberal donation given by Late Dr. M.R.Divekar of Mumbai. From then onwards, the College has flourished into a full-fledged Institution.



Year after year, the College has made progress in a phased manner. The main structure is U-shaped, characteristic of all the Trust Institutions spread over the entire district. The College is situated on the beautiful sea beach of Karwar near the National Highway. The beauty of the College campus lies in its simplicity.

Besides the main building, the College possesses an independent Library, an auditorium, Principal's Quarters, Divekar's Bungalow, Computer Laboratory, a cycle shed and a canteen. The College is surrounded by a sprawling plantation of coconut trees and a beautiful floral garden. The spacious playground is adjacent to the main building.

The College has an independent Library building. The College has a band of devoted and experienced staff. The students of the College have been showing very good results at the University examinations consistently, right from the year of inception till date. The College has produced many University Blues and Rank Holders.

The quality of education rendered in the College can very well be judged from the fact that it is graded at B level by the NAAC with a CGPA score of 2.78. The College is permanently affiliated to Karnataka University, Dharwad.

### KWT'S B.ED. COLLEGE, DANDELI

In the wake of celebrating the Golden Jubilee of Kanara Welfare Trust during the academic year 2003-2004, the Trust started an ambitious project of establishing a B.Ed. College at its Dandeli centre, captioned Kanara Welfare Trust's B.Ed. College, from the academic year 2005-2006. The College is affiliated to Karnataka University, Dharwad.



### KWT'S B.C.A. COLLEGE, KARWAR

Kanara Welfare Trust's B.C.A. College, Karwar, was established in 2008 at its Divekar College campus to cater to the needs of the students who wish to graduate in the stream of Computer Application. The College is affiliated to Karnataka University, Dharwad.

**GOKHALE CENTENARY PRE-UNIVERSITY COLLEGE, ANKOLA**

Owing to the Government policy of bifurcating the Degree College from Pre-University sections, an independent Gokhale Centenary Pre-University College came into existence in June 2001. The necessary infrastructure has been provided by the Management for developing this Institution.

At present there are three faculties at the PU level namely – Arts, Science and Commerce. The College has maintained a good performance both in the academic and sports field. The College organizes many cultural and scientific activities.

**DIVEKAR PU COLLEGE OF COMMERCE & SCIENCE, KARWAR**

As a consequence of the bifurcation of the College into Degree and PU Section, an independent Divekar Pre-University College of Commerce has come into existence from June 2001. The Management has provided necessary infrastructure for developing the College. At present there are two sections each in PU I & II year.

From 2004-05, Science course has been started in the College with well-established Laboratories for Chemistry, Physics, Biology and Computer Science.

**JANATA VIDYALAYA, DANDELI – HIGH SCHOOL & COMP. PU COLLEGE**

Janata Vidyalaya was established in 1956 in Dandeli with only 27 students. Over the years the Institution has shown a remarkable progress in catering to the educational needs of the High School and PU levels of the multilingual people of this industrial town. This Institution was upgraded as the Composite Pre-University College in the year 1969-1970. Since then, it has been providing Pre-University education in Arts and Commerce faculties, in Kannada and English media.



The Institution has been showing a rapid progress both in quality and quantity year by year. It has a sprawling campus of 14 acres. In order to fulfill its ever-expanding needs, 10 rooms and 2 toilet rooms have been added to the main building. The three rooms i.e. the rooms of Rami Reddy blocks, Silver Jubilee hall, 4 rooms sponsored by K.P.C. were also constructed in view of the increase in the students strength. With a view to facilitate the smooth running of the PU C classes, a separate beautiful building is constructed, comprising of 12 rooms with all facilities. It also has a beautiful well equipped play ground, library and other facilities for the convenience of the students. Responding to the needs of modern education, a computer section well equipped with 15 computers and all other facilities has been established. The computer section is spacious enough for 30 students to learn simultaneously. Over the years the students have secured ranks at the S.S.L.C. and PU II year public examinations. In the National Talent Search Examination many students have emerged successful at the state and national levels.



**JANATA VIDYALAYA, KADTOKA - HIGH SCHOOL & COMP. PU COLLEGE**

This Institution was originally established by Vidyaranya Sangha in the year 1959. It was taken into the fold of Kanara Welfare Trust in the year 1962. It caters to the needs of High School education for the poor and backward students of Kadtoka, Kekkar, Navilgon and Madageri. The Institution was upgraded as a Junior College in the year 1971-1972. Junior College section has been provided internship course for the students passing with educational subjects since 1982.



This Institution has greenery all around. It has an extensive garden yielding coconut trees and a plantation of cashew-nuts. Well-furnished Vijnana Bhavan and a Lecture Hall have been added in 1999-2000. Two Lecture Halls and a Library have been added during the year 2001-2002.

**JANATA VIDYALAYA, SHIRALI - HIGH SCHOOL & COMP. PU COLLEGE**

The High School was started in 1955. It was upgraded as a Junior College in the year 1982. The Institution has its own building with a Sabha-Bhavan and 15 classrooms. The building is surrounded by about 7 acres of land, a good playground. It caters to the needs of Secondary and PU Education of many villages of Bhatkal Taluk. The Institution has maintained a very good reputation as one of the best Institutions in this area. The Building with an infrastructure for computer education was constructed during the year 2002-2003.

**P.M. COMPOSITE JUNIOR COLLEGE, ANKOLA**

P.M. Composite Junior College was started in 1993, to meet the persistent demand from the parent community. The College obtained grant-in-aid status w.e.f. 25<sup>th</sup> August 2012.



The College has an independent spacious, multi-purpose building. The academic performance of the College is more than that of the state average.

Throughout the year, the College has been conducting a variety of extra-curricular activities to develop critical and analytical outlook in the students. Every year intellectual discourses like debates and discussions are arranged between students and lecturers regularly. This is a novel experiment, which is implemented in the interest of the students. The College is marching in the path of progress.



### PEOPLE'S MULTIPURPOSE HIGH SCHOOL, ANKOLA

This is the first High School of Kanara Welfare Trust established in the year June 1953. Urdu Medium section of it was added in the year 1974. This High School has been upgraded as composite PU College (Arts) since June 1993. The Institution has its own building. At present there are 15 divisions (12 divisions in Kannada medium and 3 divisions in Urdu Medium) in High School. The Institution has its own auditorium, an open



Air Theatre, Laboratory and a Library with a reading room. The Institution has a Students Co-operative Store, where the students get all the educational materials and uniforms at a concessional price. The School is also imparting Computer Education to all the students. A beautiful garden in the centre of the School complex has created a healthy atmosphere.

### JANATA VIDYALAYA, BAAD-KAGAL

The High School was established in the year 1954 to cater to the educational needs of the backward villages of Baad, Kagal, Aghanashini, Gudeangadi and Holanagadde. The School is located at a beautiful place with the Arabian Sea in the background.



Besides having a well-equipped laboratory and library, the School maintains high degree of academic standards. Many cultural, scientific and sports activities are organized. Coaching classes for Vedic Mathematics and N.T.S.E. examinations are conducted. Quiz and general knowledge competitions are held every year. Vijnana Parishat units, Scouts and Guides wings and Sanchayaka Bank are functioning actively. Computer education has been started to keep the students abreast with the development in the recently developed information technology and is made compulsory to cope with the recent developments in Information Technology.

### JANATA VIDYALAYA, MIRJAN-KODKANI

The High School was established in 1961 to meet the educational needs of the backward class pupils of north-eastern villages of Kumta Taluka. The School is situated amidst a grove of coconut and mango trees covering an area of 10 acres and is facing the national highway. The School has a well-equipped laboratory, an open-air theatre and also Kennedy Community Hall.



It has a good play ground. Computer Centre, drinking water, playground and other facilities have been provided to the students. The Scout & Guide unit of the School is very active and has represented the region in national and international events.

### JANATA VIDYALAYA, MURDESHWAR

The School was established in 1960 in Murdeshwar, a backward village in Bhatkal Taluka. The School initially started with just 24 students, now has strength of more than 500 students on the roll. Initially the School had only five classrooms. Now it has 12 rooms. A separate auditorium has come up with the help of the philanthropic public of Murdeshwar. An area of nearly 1.5 acres behind the School has been leveled providing a good playground. Computer Education is introduced to the students with liberal assistance of Shri R.N.Shetty, the well-known industrialist of Murdeshwar. A separate auditorium and a new computer laboratory have been built with the financial assistance of the generous donor, Shri Sadanand N.Shetty, a leading business magnate of Mumbai. The School betterment committee and the past students have joined their hands in the developmental activities of the School.



### JANATA VIDYALAYA, ANILGOD

The High School, which was started by the local people in 1966, was handed over to the Trust in 1968. The School caters to the need of High School education to the south-eastern area of Honnavar Taluka. The School building was constructed with the financial assistance of Community Aid Abroad (Australia) who gave a grant of Rs. 36,000/-. It is situated on the slopes of the hill overlooking the beautiful Sharavati River. Making use of the river water the School has developed a coconut garden. A playground is prepared by cutting the hillock behind the School. The open-air theatre was built with the assistance of the Malenadu Development Scheme. Toilet facilities have been provided by the donation received from the Taluka Panchayat Honavar.



### JANATA VIDYALAYA, DHARESHWAR

The High School was opened in 1964 by the Rural Education Society of Dhareshwar. It was handed over to the Trust in July 1964. It serves the southern villages of Kumta Taluk. The School is situated on a beautiful site measuring about 4 acres and 24 guntas, with a playground of 5 acres. The School has a well developed coconut plantation. Apart from this more than 3000 different varieties of plants have been planted in the School campus and School forest. Computer Education has been started. A library is extended to the building. The local Betterment Committee is taking keen interest in the all-round development of the School.





**JANATA VIDYALAYA, KASARKOD**

The School was started in the year 1960 for the benefit of students coming from rurally backward areas of Kasarkod, Hospattana and Gunavante. The School has a playground, a well-developed coconut plantation and a beautiful garden. The School has maintained good results in the S.S.L.C. examinations over the years. It has a well equipped computer room having nine computers.

**JANATA VIDYALAYA, BEDKANI**

At the footstep of the unique temple of Goddess Bhuvaneshwari is the village Bedkani, which is situated in Siddapur Taluk of Uttar Kannada District. Responding to the humble request made by the people of this region, the High School was established in the year 1965. The entire School has an area of 5 acres and 16 guntas.



Today the extensive playground covers 2 acres of land. The School is fully protected by the compound wall on all sides. The School has maintained good results in the S.S.L.C. examinations.

**JANATA VIDYALAYA, MUDGA**

The High School was established in the year 1963 to meet the educational needs of the fishermen community residing in and around Arga of Karwar Taluk. The Sea-Bird Naval project has taken over the entire area and the School was shifted brick-by-brick to Mudga village, a new rehabilitation area. A new building was constructed at a cost of Rs. 18 Lakhs at the Sea Bird Project rehabilitation colony.

**SMT. KAMALABAI PIKLE HIGH SCHOOL, KATGAL**

The Institution was started by the local people in June 1966 and was later handed over to Kanara Welfare Trust, Ankola. The School is situated by the side of state highway at Katgal, which is only 13 kms, from Kumta town. Silver Jubilee was celebrated in 1994. Reputed Lawyer of Bombay High Court, and Income Tax consultant, Shri S.V.Pikle, who hails from this place has given liberal donation. The School is named after his mother, Smt. Kamalabai Pikle. A beautiful garden, a function hall, and mid-day meals for the needy students are some of the specialties of the School. The local Betterment Committee is taking keen interest in the all-round development of the School.



### JANATA VIDYALAYA, KULVE-BAROOR

The School was started in 1968 in the interior forest area of Sirsi Taluk. The School has a spacious building located in an area of about 8 acres. The School has twin staff quarters. Acacia plantation, a coconut garden and a beautiful flower garden are being developed in the School premise. Greater attention is paid to the improvement of the academically weak students. Every effort is made for the all-round development of the students. Sincere efforts are being made by the members of the staff towards the all-round development of the students who come from socially backward communities.



### JANATA VIDYALAYA, KADWAD

This High School at Kadwad in the outskirts of Karwar town was started in 1960 to serve the educational needs of the interior eastern villages of Karwar Taluka. It is situated on the hilltop with a vast area of about 8 acres. The School has a beautiful building with six rooms, a well-equipped laboratory and a library. The School is performing extremely well in curricular and co-curricular activities under the able guidance of experienced teachers. The Institution has an open-air theatre and a vast playground.



### ENGLISH MEDIUM SCHOOL, DANDELI

English Medium School was established on the 1<sup>st</sup> of August 1958. The School has its own building. It has a very beautiful garden, with mango trees and a spacious play ground in the campus. Co-curricular activities and academic performances are excellent. There are well qualified, trained experienced, devoted teaching and non-teaching staff. English Medium Higher Primary School, Dandeli was established on the 8<sup>th</sup> of June 1956.



It is an aided co-educational Institution having two divisions in each standard (from Std. I to VII) Out of 14, only 11 sections are aided. The School has its own separate building with 18 classrooms. The School is well equipped with furniture, sports materials, science materials and library books. It has sufficient water and toilet facilities. The School has a spacious play ground in the campus of 12 acres of land. The Institution consistently shows excellent performance, with 100% passing in VII Std. annual examination. The students have been representing District Level and State Level Competitions in sports. It has Scouts, Guides and several units. The Institution has well-qualified experienced and devoted teaching and non-teaching staff. The strength of the School exceeds 1000 students. There is a separate computer section which was started in July 1998.



**THAKKAR BAPA TAILORING SCHOOL, ANKOLA**

This first tailoring School was started in 1956 by the Trust for the benefit of the backward class people. The course duration is one year. It has provision to accommodate 30 students annually. It is recognized by the Board of Technical Education.

Tailoring, embroidery and knitting are included in the School curriculum. It has a qualified tailoring teacher. The School is adequately equipped and is provided with other accessories.

**ANANDASHRAM TAILORING SCHOOL, MUNDGOD**

The Trust has another Tailoring School at Mundgod opened in 1969 mainly for the benefit of the backward class women, including Lamanis. This School is also recognized by the Board of Technical Education of Karnataka Government. The Institution has its own well-equipped building at Bankapur road of Mundgod town. There are 12 sewing machines and has the provision to accommodate 20 students annually. The Institution also provides pre-primary education for the children below five years.

**DINKAR KALANIKETANA, KARWAR AND ANKOLA**

With an idea to train the talents in classical music the Trust runs Dinkar Kalaniketana at two places - Karwar and Ankola. There is a qualified teacher to train the students. The students so trained take Junior and Senior Examinations conducted by the Secondary Education Board, Bangalore.

**SHRI SATYA SAI BALWADI**

This Balwadi was started at Sarvodaya Nagar, a fisherman colony, near Kodibag, Karwar during 1985-1986 jointly by the N.S.S. Unit of Divekar College of Commerce, Karwar and Shri Satya Sai Samiti, Kodibag. The Trust took over this School in November 1989 following a request by the Balawadi Development Committee. It is housed in a small community hall constructed by the N.S.S. Unit. 45 children belonging to backward fishermen and other communities study in the nursery School. A trained teacher and helper look after them. The children are provided with the mid-day meal with the financial assistance from Kruger Foundation for Child Aid, Karwar. The Balawadi has a small play ground. Water facility is provided from a borewell. Now Balawadi has been provided with an independent building having adequate space.

Lions and Rotary Clubs of Karwar have donated furniture and utensils to the School. The Rotary Innerwheel Club has donated clothes to the children. In the past, Mrs. Barbara and Mr. Martin Barbara of U.K. visited this tiny Institution. They were kind enough to donate a sum of Rs.10,000/- every year to run the School. Similarly Mr. William and Miss Fraser of U.K. have also donated a substantial amount of Rs.20,900/-.

**Kanara Welfare Trust, Ankola, in association with Kruger Foundation for Child Aid, Karwar, has been working hand-in-hand to implement several projects in the forest district of Uttar Kannada in the fields of education, rural health care, social empowerment, etc.**

Kanara Welfare Trust is committed to ensure that no child is deprived of education & basic health care due to lack of finance.

*The following projects are currently in progress.*

## CHANGE MAKERS FOR A BETTER TOMORROW

The world is witnessing a phenomenon not conducive for the Nature's evolutionary purpose and process. One commonly hears about Man's onslaught on the Nature, resulting in destruction of natural elements for one's own need, nay greed. The concern for the fellow human beings is marginal. Respect and love for the Nature and the environment is minimal. The Man tends to preoccupy himself in trying to only talk about this phenomenon at an intellectual level and not making a serious attempt to address the real problem.

The World cannot be changed without bringing about a change at the level of Man. If human mind changes, the world will be reflected in its change and that's the only way to change the world and save it from the downward slide that it is presently experiencing. If Man can make a positive effort to supplement the Nature's inbuilt mechanism, the acceleration towards the upward trend would be easily gained.

An attempt was envisaged and initiated at a relatively small humble level to create a group of young Boys and Girls who were in their formative years of life preferably in the age group of 14-16, who could be oriented to become change makers for the world tomorrow. The target group is chosen from the student community studying in the 8<sup>th</sup> standard in the Secondary level of Education. The candidates are selected from Schools spanning the entire length and breadth of the Uttar Kannada District. These students are brought together every 3 months for a special camp wherein they are imparted with thought-provoking and holistic training from various experts from different fields. Two batches (of 3 years each) of the project have already been completed. We are currently conducting Orientation Retreats for the third batch of students. A newsletter of the project named "Parivartan" is being brought out on a quarterly basis.



## MOBILE HEALTH CARE PROJECT

This new venture is being conducted with the support of Kruger Foundation, Karwar, and Shri Devadatt Kamat, Advocate, Supreme Court, New Delhi. This project involving conduct of free health camps at various rural places in the district was envisaged to enable the economically backward populace to avail of quality medical care by expert doctors.

In the camps held so far, a total of 700+ patients were treated. Medicines and health supplements worth Rs.2,00,000/- were distributed to the needy patients free of cost. Two cases of children suffering from profound hearing loss and incapability of speech were identified at these camps. Follow-up treatments were done and advanced hearing aid instruments worth Rs.40,000/- were provided to them.

*A Mobile Health Care Van equipped with a doctor, nurse and medical equipment is already being run under the auspices of the Kruger Foundation with the help of an NGO, Sanjeevani Trust at Joida Taluk of Uttar Kannada District. The mobile unit with a qualified doctor and a nurse travel to different villages on specified days of the week.*



## FINANCIAL ASSISTANCE FOR EDUCATION

This project, sponsored by Kruger Foundation and Shri Devadatt Kamat, Advocate, Supreme Court, New Delhi, provides financial assistance to those who, due to lack of financial resources, are deprived of pursuing higher education. Every year, 300 students are awarded with a scholarship amount of Rs.3000/- each. This scholarship would continue till their graduation provided they keep up their percentage results.



## LECTURE SERIES

Every year, the entire student community of the district come together to participate in a series of events wherein eminent speakers are invited to address the youth and the student community mainly from the rural area. This is an occasion where the younger elements have a chance of receiving proper messages from those who are guiding the destiny of the country in an efficient and meaningful way.





## P.S.KAMAT MEMORIAL DISTRICT LEVEL INTER-COLLEGIATE DEBATE COMPETITION

This annual event is instituted by Shri Devadatt Kamat in the memory of his grandfather, Late P.S.Kamat, who was a Gandhian and a legal luminary. Late P.S.Kamat worked for the unification of the then Mysore State, subsequently named Karnataka State. The competition has been organized as a part of the campaign for alerting the youth of the District to the social, economic and political problems of our country and for developing leadership quality among them. The district level competition carries the following prize amounts – *First Prize – Rs.50000, Second Prize – Rs.30000, Third Prize – Rs.20000, Two Consolation Prizes of Rs.5000 each.* Along with these prizes, various other attractive incentives are also given to the winners.



Apart from these combined regular projects, Kanara Welfare Trust is also involved in various other individual activities.

Some of them are –

- **Conduct of Teacher Orientation programmes**

Holding a common ground for discussion and interaction with teachers, with a view to understand their difficulties and handicaps in their performance as teachers; and, more so, in appreciating their practical problems while imparting the meaningful instructions to the student community.



- **Financial Assistance for persons with disabilities**

The Trust also helps individual cases of people suffering from disabilities / diseases, etc. by providing them with financial assistance for treatment and medication.





## Institution-wise Students Strength for the last five years

Sl.	Name of the Institution	Student Strength				
		2009-2010	2010-2011	2011-2012	2012-2013	2013-2014
	<b><u>DEGREE COLLEGES</u></b>					
1	Gokhale Centenary College, Ankola	254	320	348	355	355
2	Divekar College Of Commerce, Karwar	286	294	290	332	315
3	KWT's College of Education, Dandeli	69	77	53	45	80
4	KWT's B.C.A. College, Karwar	41	47	35	57	64
	<b><u>JUNIOR COLLEGES</u></b>					
5	Gokhale Centenary Pre-University College, Ankola	398	360	286	204	206
6	Divekar Pre-University Commerce College, Karwar	349	206	193	176	184
7	Janata Vidyalaya Comp. Junior College, Dandeli	295	245	215	231	249
8	Janata Vidyalaya Comp. Junior College, Kadtoka	193	174	160	150	114
9	Janata Vidyalaya Comp. Junior College, Shirali	590	538	497	492	490
10	P.M. Comp. Junior College, Ankola	184	152	109	100	144
11	KWT's PU Science College, Karwar	137	106	80	59	44
	<b><u>HIGH SCHOOLS</u></b>					
12	People's Multipurpose High School, Ankola	627	628	543	515	479
13	People's Multipurpose High School (Eng. Med.), Ankola	-	-	55	111	150
14	Janata Vidyalaya, Baad-Kagal	116	270	276	245	252
15	Janata Vidyalaya, Shirali	496	389	309	268	228
16	Janata Vidyalaya, Dandeli	943	898	962	1001	984
17	Janata Vidyalaya, Kadwad	122	133	114	106	98
18	Janata Vidyalaya, Kasarkod	279	272	261	243	200
19	Janata Vidyalaya, Murdeshwar	669	661	552	444	462
20	Janata Vidyalaya, Mirjan-Kodkani	367	387	394	385	382
21	Janata Vidyalaya, Kadtoka	266	248	235	244	223
22	Janata Vidyalaya, Mudga	124	137	130	121	125

Sl.	Name of the Institution	Student Strength				
		2009-2010	2010-2011	2011-2012	2012-2013	2013-2014
23	Janata Vidyalaya, Dhareshwar	206	170	141	150	148
24	Janata Vidyalaya, Bedkani	184	168	167	162	160
25	Smt. Kamalabai Pikale High School, Katgal	222	238	251	258	266
26	Janata Vidyalaya, Anilgod	122	123	101	100	116
27	Janata Vidyalaya, Kulve-Baroor	144	119	110	124	114
	<b><u>PRIMARY AND PRE-PRIMARY SCHOOLS</u></b>					
28	English Medium Primary School, Dandeli	954	1007	1084	1461	1162
29	Kannada Medium Primary School, Dandeli	309	364	389	424	443
30	Dr. Dinkar Desai Primary School, Ankola	341	435	456	486	490
31	Janata Vidyalaya Dinkar Primary School, Dhareshwar	77	115	153	200	240
32	Shrimat Sadyojat Shankarashram Swamiji Balamandir, Shirali	11	11	27	97	146
33	English Medium Nursery School, Dandeli	320	298	307	305	301
34	Kannada Medium Nursery School, Dandeli	98	96	118	122	107
35	Thakkar Bapa Nursery School, Ankola	167	192	181	184	193
36	Janata Vidyalaya Dinkar Pre-Primary School, Dhareshwar	65	80	76	78	75
37	Anandashrama Balavikasa Kendra, Mundgod	15	15	15	15	15
	<b><u>OTHER SOCIAL SERVICE INSTITUTIONS</u></b>					
38	Thakkar Bapa Tailoring School, Ankola	23	23	23	15	15
39	Anandashram Tailoring School, Mundgod	15	15	15	12	12
40	Dinkar Kalaniketan Music School, Ankola	5	5	5	21	21
41	Dinkar Kalaniketan Music School, Karwar	25	25	25	25	22
42	Satyasai Balawadi & Balavikas Kendra, Kodibag	10	10	10	0	0
43	Computer Training Centre, Karwar	155	160	160	216	430
44	Computer Training Centre, Dandeli	485	660	745	666	657
	<b>GRAND TOTAL</b>	<b>10621</b>	<b>10871</b>	<b>10656</b>	<b>11005</b>	<b>10961</b>

## Institution-wise SSLC & PU results for the last five years

Sl.	Name of the Institution	Percentage of Results				
		2009-2010	2010-2011	2011-2012	2012-2013	2013-2014
	<b><u>HIGH SCHOOLS</u></b>					
1	Janata Vidyalaya, Anilgod	89.47	87.80	96.67	92.11	96.30
2	Janata Vidyalaya, Baad-Kagal	77.17	89.02	94.68	90.12	95.18
3	Janata Vidyalaya, Bedkani	58.33	83.67	96.55	72.22	95.83
4	Janata Vidyalaya, Dandeli	71.42	95.76	95.62	70.18	85.94
5	Janata Vidyalaya, Dhareshwar	74.57	90.38	90.91	90.00	95.24
6	Janata Vidyalaya, Kadtoka	72.36	96.25	88.14	90.00	97.18
7	Janata Vidyalaya, Kadwad	88.88	100	92.11	86.84	86.21
8	Janata Vidyalaya, Kulve-Baroor	90.32	100	96.55	93.33	95.24
9	Janata Vidyalaya, Mirjan	90.38	92.86	90.83	80.42	88.03
10	Janata Vidyalaya, Mudga	90.90	92.31	97.22	81.13	100
11	Janata Vidyalaya, Murdeshwar	76.08	86.36	83.10	86.14	76.32
12	Janata Vidyalaya, Shirali	90.90	99.09	95.69	79.52	94.12
13	Janata Vidyalaya. Kasarkod	71.76	75.61	86.76	86.84	91.78
14	P.M.High School, Ankola	67.36	94.55	97.73	87.70	95.60
15	P.M. Eng. Med. High School, Ankola	-	-	-	-	100
16	S.K.P.High School, Katgal	73.07	95.38	97.37	86.42	87.34
	<b><u>PU COLLEGES</u></b>					
1	Divekar P.U. College, Karwar – Commerce	78.35	54.74	86.60	72.29	67.07
2	Divekar P.U. College, Karwar – Science	47.14	28.30	59.57	51.61	23.08
3	G.C.P.U.College, Ankola – Arts	44.44	41.38	61.54	63.64	66.67
4	G.C.P.U.College, Ankola - Commerce	61.53	52.63	91.18	100	85.00
5	G.C.P.U.College, Ankola – Science	55.85	52.50	65.91	82.35	77.78
6	J.V.Comp. Jr. College, Dandeli – Arts	64.70	48.94	73.53	79.31	75.00
7	J.V.Comp. Jr. College, Dandeli – Commerce		40.00	85.37	77.97	86.44
8	J.V.Comp. Jr. College, Kadtoka – Arts	91.20	92.47	93.33	86.42	80.30
9	J.V.Comp. Jr. College, Shirali – Arts	83.98	79.31	96.15	93.51	91.45
10	J.V.Comp. Jr. College, Shirali – Commerce		87.50	98.33	94.20	97.30
11	P.M.Comp. Jr. College, Ankola - Arts	63.88	72.09	85.71	77.50	67.92

**BALANCE SHEET of the year 2005-2006**

Ulhas K Anvekar, F C A  
Chartered Accountant

Main Road, Kajubag  
K A R W A R - 581 301 (U K)

**KANARA WELFARE TRUST  
ANKOLA**

**BALANCE SHEET AS AT 31ST MARCH 2006**

LIAIBILITIES		AMOUNT	ASSETS		AMOUNT
TRUST FUND	3,288,457.26		ASSETS & PROPERTIES:		
Add: Donation	2,655,765.00		BAL/BAL SHEET	34,542,187.37	
Less: Deficit	1,143,973.38	4,800,248.88	Add: Additions	3,220,092.30	37,762,279.67
CAPITAL DONATION: BAL/BAL SHEET		23,196,585.71	COMPUTERS: BAL/BAL SHEET	1,126,895.50	
ENDOWMENT DONATION: BAL/BAL SHEET		33,267.25	Add: Additions	172,541.60	1,299,437.10
DEP FUND: BAL/BAL SHEET		472,346.07	DEAD STOCK: BAL/ BAL SHEET	810,440.10	
DEV FUND: APLBS	3,695,180.25		Add: Additions	340,846.94	1,151,287.04
Add: Additions	688,621.00	4,383,801.25	EQUIPMENT: BAL/BAL SHEET		61,238.00
RESERVE FUND: BAL/BAL SHEET		417,174.14	INVESTMENTS IN FD:		
RUPEE RESERVE FUND	7,978,033.76		BAL/BAL SHEET	2,555,311.00	
Add: Addition	713,300.00	8,691,333.76	Add: Additions	3,650,000.00	6,205,311.00
GOLDEN JUBILEE FUND:			UGC DEV ASSISTANCE: BAL/BAL/SHEET		293,785.84
BAL/BAL SHEET	497,360.00	3,618,926.50	SUNDRY ASSETS: BAL/BAL SHEET		80,732.48
Add: Net Additions	3,121,566.50	503,930.00	DEV FUND SCHOOL		517,452.00
SILVER JUBILEE FUND: BAL/BAL SHEET		1,996,314.57	& COLLEGE: BAL/BAL SHEET		
CAPITAL GRANT: BAL/BAL SHEET			CASH & BANK BALANCE		
OTHER LIABILITIES			Cash in Hand	116,646.60	
Irrigation Project: BAL/BAL SHEET		2,416.00	Cash at Bank	4,350,087.64	4,466,734.24
Complex Deposit: BAL/BAL SHEET		500,000.00			
Scholarship Payable	275,118.00	321,208.00			
Add: Additions	46,090.00	6,304.85			
UNADJUSTED SCHEME: BAL/ABL SHEET		8,050.00			
CREDITORS PAYABLE: BAL/BAL SHEET		2,361,030.39			
ADVANCES PAYABLE		8,320.00			
DEPOSITS : APLBS		517,000.00			
STUDENTS & PARENTS CONTRIBUTION					
Total Rs		51,838,257.37	Total Rs		51,838,257.37

As Per Separate Report of Even Date

KARWAR  
21.01.2007



ULHAS K ANVEKAR  
CHARTERED ACCOUNTANT

**BALANCE SHEET of the year 2006-2007**

Ulhas K Anvekar, F C A  
Chartered Accountant

"Radhika"  
Main Road, Kajubag  
K A R W A R - 581 301 (U K)

**KANARA WELFARE TRUST  
ANKOLA  
BALANCE SHEET AS AT 31ST MARCH 2007**

LIAIBILITIES		AMOUNT	ASSETS		AMOUNT
TRUST FUND	4,800,248.88		ASSETS & PROPERTIES:		
Add: Donation	3,165,598.50		BAL/BAL SHEET	37,762,279.67	
Less: Deficit	1,745,582.73	6,220,264.65	Add: Additions	475,294.80	38,237,574.47
CAPITAL DONATION: BAL/BAL SHEET		23,196,585.71	COMPUTERS: BAL/BAL SHEET	1,299,437.10	
ENDOWMENT DONATION: BAL/BAL SHEET		33,267.25	Add: Additions	146,755.00	1,446,192.10
DEP FUND: BAL/BAL SHEET		472,346.07	DEAD STOCK: BAL/BAL SHEET		1,151,287.04
DEVELOPMENT & MENT. FUND: APLBS	4,383,801.25		EQUIPMENT: BAL/BAL SHEET		61,238.00
Add: Additions	1,160,355.00	5,544,156.25	DEPOSIT		25,000.00
RESERVE FUND: BAL/BAL SHEET		417,174.14	INVESTMENTS IN FD: BAL/BAL SHEET		6,205,311.00
RUPEE RESERVE FUND	8,691,333.76		UGC DEV ASSISTANCE: BAL/BAL SHEET		293,785.84
Add: Addition	980,128.00	9,671,461.76	SUNDRY ASSETS: BAL/BAL SHEET		80,732.48
GOLDEN JUBILEE FUND:			DEV FUND SCHOOL & COLLEGE : APLBS		517,452.00
BAL/BAL SHEET	3,618,926.50		CASH & BANK BALANCE		
Add: Additions	1,011,846.00	4,630,772.50	Cash in Hand	68,056.86	
SILVER JUBILEE FUND: BAL/BAL SHEET		503,930.00	Cash with Banks	8,148,544.35	8,216,601.21
CAPITAL GRANT: BAL/BAL SHEET	1,996,314.57				
Addition:	328,438.00	2,324,752.57			
ADVANCES		1,832,703.39			
OTHER LIABILITIES					
Irrigation Project: BAL/BAL SHEET	2,416.00				
Complex Deposit: BAL/BAL SHEET	500,000.00	502,416.00			
Scholarship Payable	321,208.00				
Add: Additions	24,461.00	345,669.00			
SCHEME ACCOUNT: BAL/BAL SHEET		6,304.85			
CREDITORS PAYABLE: BAL/BAL SHEET		8,050.00			
DEPOSITS : APLBS		8,320.00			
CONTRIBUTION : APLBS		517,000.00			
<b>TOTAL RS.</b>		<b>56,235,174.14</b>	<b>TOTAL RS.</b>		<b>56,235,174.14</b>

As Per Separate Report of Even Date

KARWAR  
18.06.2007



*Ulhas K Anvekar*  
ULHAS K ANVEKAR  
CHARTERED ACCOUNTANT



**BALANCE SHEET of the year 2007-2008**

**KANARA WELFARE TRUST**  
**G. C. COLLEGE CAMPUS, N. H. 17 - ANKOLA - 581314**

**BALANCE SHEET AS AT 31ST MARCH 2008**

LIAIBILITIES		AMOUNT	ASSETS		AMOUNT
TRUST FUND	6,220,264.65		ASSETS & PROPERTIES:		
Add: Donation	4,985,253.00	11,205,517.65	BAL/APLB/SHEET	38,237,574.47	
			Add: Additions	2,172,534.00	40,410,108.47
CAPITAL DONATION:APLB/SHEET		23,196,585.71	COMPUTERS:APLB/SHEET	1,446,192.10	
ENDOWMENT DONATION:APLB/SHEET		33,267.25	Add: Additions	105,893.00	1,552,085.10
DEP FUND: APLB/SHEET		472,346.07	DEAD STOCK:APLB/SHEET	1,151,287.04	
DEVLOPMENT & MAINT. FUND:APLBS	5,544,156.25		Add: Additions	485,400.00	1,636,687.04
Add: Additions	2,677,250.50	8,221,406.75	EQUIPMENT:APLB/SHEET		61,238.00
RESERVE FUND:APLB/SHEET		417,174.14	DEPOSIT:APLB/SHEET		25,000.00
RUPEE RESERVE FUND:APLB/SHEET	9,671,461.76		INVESTMENTS IN FIXED DEPOSITS		8,364,967.00
Addition	948,300.00	10,619,761.76	UGC DEV ASSISTANCE		355,899.84
GOLDEN JUBILEE FUND:			SUNDRY ASSETS:APLB/SHEET		80,732.48
BAL/ APLB/SHEET	4,630,772.50	4,730,772.50	DEV FUND SCHOOL & COLLEGE :APLB/SHEET		517,452.00
Add: Additions	100,000.00		CHANGE MAKERS GROUP		204,337.00
SILVER JUBILEE FUND:APLB/SHEET		503,930.00	CASH & BANK BALANCE		
CAPITAL GRANT:APLB/SHEET		2,324,752.57	Cash in Hand	54,742.84	
ADVANCES		1,013,304.39	Balance with Banks	7,455,793.09	7,510,535.93
OTHER LIABILITIES			INCOME AND EXPENDITURE A/C		
Irrigation Project: BAL/ APLB/SHEET	2,416.00		Deficit for the Year		3,657,535.78
Complex Deposit::BAL/ APLB/SHEET	500,000.00	502,416.00			
SCHOLARSHIP PAYABLE:APLB/SHEET		345,669.00			
SCHEME ACCOUNT:APLB/SHEET		6,304.85			
CREDITORS PAYABLE:APLB/SHEET		8,050.00			
BUILDING FUND		250,000.00			
DEPOSITS :APLB/SHEET		8,320.00			
CONTRIBUTION : APLB/SHEET		517,000.00			
<b>TOTAL RS.</b>		<b>64,376,578.64</b>	<b>TOTAL RS.</b>		<b>64,376,578.64</b>

As Per Separate Report of Even Date

KARWAR  
19.06.2008

KARWAR  
19.06.2008

KANARA WELFARE TRUST  
ANKOLA (Uttara Kannada)



U. K. ANVEKAR  
CHARTERED ACCOUNTANT

## BALANCE SHEET AS AT 31ST MARCH 2009



  
TRUSTEE  
(KANARA WELFARE TRUST)



  
U. K. ANVEKAR  
CHARTERED ACCOUNTANT

**BALANCE SHEET of the year 2009-2010**

**KANARA WELFARE TRUST**  
**G. C. COLLEGE CAMPUS, N. H. 17 - ANKOLA - 581314**

**BALANCE SHEET AS AT 31ST MARCH 2010**

LIAIBILITIES		AMOUNT	ASSETS		AMOUNT
TRUST FUND:APLB/SHEET	16,443,950.65		ASSETS & PROPERTIES:		
Add: Donation	6,472,479.00	22,916,429.65	BAL/APLB/SHEET	43,631,054.86	
			Add: Additions	3,473,978.72	47,105,033.58
CAPITAL DONATION:APLB/SHEET		23,196,585.71	COMPUTERS:APLB/SHEET	2,363,597.35	
ENDOWMENT DONATION:APLB/SHEET		33,267.25	Add: Additions	209,170.00	2,572,767.35
DEP FUND: APLB/SHEET	472,346.07		DEAD STOCK:APLB/SHEET	1,947,138.04	
Add: Additions	985,170.00	1,457,516.07	Add: Additions	550,885.00	2,498,023.04
DEVELOPMENT & MAINT. FUND:APLBS		10,406,683.75	EQUIPMENT:APLB/SHEET	61,238.00	
RESERVE FUND:APLB/SHEET		417,174.14	Add: Additions	62,945.00	124,183.00
RUPEE RESERVE FUND:APLB/SHEET	11,556,811.76		DEPOSIT:APLB/SHEET		25,000.00
Add: Addition	923,250.00	12,480,061.76	INVESTMENTS IN FDAPLB/S	9,130,476.00	
GOLDEN JUBILEE FUND:APLB/SHEET		5,079,972.50	Add: Additions	1,149,500.00	10,279,976.00
SILVER JUBILEE FUND:APLB/SHEET		503,930.00	UGC DEV ASSISTANCE APLB/S	1,727,299.84	
CAPITAL GRANT:APLB/SHEET	3,621,606.57		Add: Additions	1,312,109.00	3,039,408.84
Add: Additions (UGC)	1,979,968.00	5,601,574.57	SUNDRY ASSETS:APLB/SHEET		80,732.48
ADVANCES		101,312.63	DEV FUND SCHOOL & COLLEGE :APLB/SHEET		517,452.00
OTHER LIABILITIES		34,186.00	CHANGE MAKERS GROUP:APLBS	204,337.00	
SCHOLARSHIP PAYABLE:APLB/SHEET	382,550.00		Add: Additions	748,505.00	952,842.00
Add: Additions	224,388.00	606,938.00	CASH & BANK BALANCE		
SCHEME ACCOUNT:APLB/SHEET		6,304.85	Cash in Hand	67,341.77	
CONTRIBUTION : APLB/SHEET	517,000.00		Balance with Banks	9,902,670.95	9,970,012.72
Add: Additions	261,341.00	778,341.00	INCOME AND EXPENDITURE A/C		
LIC/OTHER PAYABLE	57,470.40		APL/BSHEET	5,647,072.10	
Less: Deduction	20,624.00	36,846.40	Deficit for the Year	1,110,991.17	6,758,063.27
CREDITORS PAYABLE:APLB/SHEET		8,050.00			
BUILDING FUND:APLB/SHEET		250,000.00			
DEPOSITS :APLB/SHEET		8,320.00			
<b>TOTAL RS.</b>		<b>83,923,494.28</b>	<b>TOTAL RS.</b>		<b>83,923,494.28</b>

As Per Separate Report of Even Date

KARWAR  
24.06.2010

CHAIRMAN  
KANARA WELFARE TRUST  
ANKOLA (Uttar Kannada)  
CHAIRMAN / TRUSTEE  
(KANARA WELFARE TRUST)



U. K. ANVEKAR  
CHARTERED ACCOUNTANT



# BALANCE SHEET of the year 2010-2011

## KANARA WELFARE TRUST G. C. COLLEGE CAMPUS, N. H. 17 - ANKOLA - 581314

### BALANCE SHEET AS AT 31ST MARCH 2011


LIAIBILITIES	AMOUNT	ASSETS	AMOUNT
TRUST FUND:APLB/SHEET	22,916,429.65	ASSETS & PROPERTIES:	
Add: Donation	7,093,579.00	BAL/APLB/SHEET	47,105,033.58
		Add: Additions	4,277,738.50
CAPITAL DONATION:APLB/SHEET	23,196,585.71		51,382,772.08
ENDOWMENT DONATION:APLB/SHEET	33,267.25	COMPUTERS:APLB/SHEET	2,572,767.35
DEP FUND: APLB/SHEET	1,457,516.07	Add: Additions	234,175.00
DEVLOPMENT & MAINT. FUND:APLBS	10,406,683.75		2,806,942.35
RESERVE FUND:APLB/SHEET	417,174.14	DEAD STOCK:APLB/SHEET	2,498,023.04
		Add: Additions	115,333.00
RUPEE RESERVE FUND:APLB/SHEET	12,480,061.76		2,613,356.04
Add: Addition	831,200.00	FURN. & EQUIPMENT:APLB/SHEET	124,183.00
		Add: Additions	447,194.00
GOLDEN JUBILEE FUND:APLB/SHEET	5,079,972.50		571,377.00
SILVER JUBILEE FUND:APLB/SHEET	503,930.00	BOOKS	92,303.00
CAPITAL GRANT:APLB/SHEET	5,601,574.57	UGC DEV ASSISTANCE APLB/S	3,039,408.84
Add: Additions (UGC)	1,295,382.00	Add: Additions	1,104,114.00
	6,896,956.57		4,143,522.84
OTHER LIABILITIES	34,186.00	INVESTMENTS FD WITH BANKS	12,023,962.71
SCHOLARSHIP PAYABLE	76,010.00	DEPOSIT:APLB/SHEET	25,000.00
SCHEME ACCOUNT:APLB/SHEET	6,304.85	SUNDRY ASSETS:APLB/SHEET	80,732.48
CONTRIBUTION : APLB/SHEET	778,341.00	ADVANCES	90,442.62
LIC/OTHER PAYABLE :APLB/SHEET	36,846.40	Shri A Ravindra Advance Receivable	204,058.20
Less: Deduction	3,678.10	CASH & BANK BALANCE	
	33,168.30	Cash in Hand	31,933.09
CREDITORS PAYABLE:APLB/SHEET	8,050.00	Balance with Banks	10,714,428.11
DEPOSITS :APLB/SHEET	8,320.00		10,746,361.20
FEE COMP. GRANT	625,835.00	INCOME AND EXPENDITURE A/C	
		APL/BSHEET	6,758,063.27
		Deficit for the Year	1,344,677.76
			8,102,741.03
TOTAL RS.	92,883,571.55	TOTAL RS.	92,883,571.55

KARWAR  
25.06.2011

  
 Administrative Officer  
 KANARA WELFARE TRUST  
 (KANARA WELFARE TRUST)  
 ANKOLA (Dist. Kanara)



As Per Separate Report of Even Date

  
 U. K. ANVEKAR  
 CHARTERED ACCOUNTANT



# BALANCE SHEET of the year 2011-2012

## KANARA WELFARE TRUST G. C. COLLEGE CAMPUS, N. H. 17 - ANKOLA - 581314

### BALANCE SHEET AS AT 31ST MARCH 2012

LIAIBILITIES		AMOUNT	ASSETS		AMOUNT
TRUST FUND:APLB/SHEET	30,010,008.65		ASSETS & PROPERTIES:		
Add: Capital Donation	6,176,637.00	36,186,645.65	BAL/APLB/SHEET	51,382,772.08	
			Add: Addition during the year	3,724,753.00	55,107,525.08
CAPITAL DONATION:APLB/SHEET		23,196,585.71	COMPUTERS:APLB/SHEET	2,806,942.35	
ENDOWMENT DONATION:APLB/SHEET		33,267.25	Add: Addition during the year	405,500.00	3,212,442.35
DEP FUND: APLB/SHEET		1,457,516.07	DEAD STOCK:APLB/SHEET	2,613,356.04	
DEVELOPMENT & MAINT. FUND:APLBS	10,406,683.75		Add: Addition during the year	223,839.00	2,837,195.04
Add: Addition during the year	1,755,303.00	12,161,986.75	FURN. & EQUIPMENT:APLB/SHEET	571,377.00	
RESERVE FUND:APLB/SHEET		417,174.14	Add: Addition during the year	3,562,467.00	
RUPEE RESERVE FUND:APLB/SHEET	13,311,261.76		Add: Additions (Others)	792,927.00	4,926,771.00
Add: Addition during the year	958,150.00	14,269,411.76	BOOKS:APLB/SHEET	92,303.00	
GOLDEN JUBILEE FUND:APLB/SHEET	5,079,972.50		Add: Addition during the year	36,121.00	128,424.00
Add: Addition during the year	9,003.00	5,088,975.50	UGC DEV ASSISTANCE:APLB/S	4,143,522.84	
SILVER JUBILEE FUND:APLB/SHEET		503,930.00	Add: Addition during the year	660,608.00	4,804,130.84
CAPITAL GRANT:APLB/SHEET	6,896,956.57		INVESTMENTS FD WITH BANKS:		
Add: Addition during the year (UGC)	7,116,200.00	14,013,156.57	BAL/APLB/SHEET	12,023,962.71	
DEPOSITS :APLB/SHEET		8,320.00	Add: Addition during the year	1,957,263.00	13,981,225.71
			DEPOSIT:APLB/SHEET	25,000.00	
			Add: KU Affiliation Deposit	23,000.00	
			Add: KPTCL Deposits	1,445.00	49,445.00
			SUNDRY ASSETS:APLB/SHEET		80,732.48
			ADVANCES:APLB/SHEET	90,442.62	
			Add: Additions	402,569.00	493,011.62
			CASH & BANK BALANCE		
			Cash in Hand	39,645.50	
			Balance with Banks	12,590,840.25	12,630,485.75
			INCOME AND EXPENDITURE A/C		
			APL/BSHEET	8,102,741.03	
			Deficit for the Year	982,839.50	9,085,580.53
TOTAL RS.		107,336,969.40	TOTAL RS.		107,336,969.40



KARWAR  
30.06.2012

  
CHAIRMAN / TRUSTEE  
(KANARA WELFARE TRUST)



As Per Separate Report of Even Date

  
U. K. ANVEKAR  
CHARTERED ACCOUNTANT

# BALANCE SHEET of the year 2012-2013

## KANARA WELFARE TRUST G. C. COLLEGE CAMPUS, N. H. 17 - ANKOLA - 581314

### BALANCE SHEET AS AT 31ST MARCH 2013

LIAIBILITIES		AMOUNT	ASSETS		AMOUNT
TRUST FUND:APLB/SHEET	3,61,86,645.65	4,20,25,626.65	ASSETS & PROPERTIES:		
Add: Capital Donation	58,38,981.00		BAL/APLB/SHEET	5,51,07,525.08	5,86,67,163.33
CAPITAL DONATION:APLB/SHEET		2,31,96,585.71	Add: Addition during the year	35,59,638.25	
ENDOWMENT DONATION:APLB/SHEET		33,267.25	COMPUTERS:APLB/SHEET	32,12,442.35	35,09,326.35
GENERAL WELFARE FUND		1,00,000.00	Add: Addition during the year	2,96,884.00	
DEVLOPMENT & MAINT. FUND:APLBS		1,21,61,986.75	DEAD STOCK:APLB/SHEET	28,37,195.04	31,19,885.04
RESERVE FUND:APLB/SHEET		4,17,174.14	Add: Addition during the year	2,82,690.00	
RUPEE RESERVE FUND:APLB/SHEET	1,42,69,411.76	1,52,79,656.76	FURN. & EQUIPMENT:APLB/SHEET	49,26,771.00	50,60,033.00
Add: Addition during the year	10,10,245.00		Add: Addition during the year	1,33,262.00	
GOLDEN JUBILEE FUND:APLB/SHEET		50,88,975.50	BOOKS:APLB/SHEET	1,28,424.00	2,54,070.00
SILVER JUBILEE FUND:APLB/SHEET		5,03,930.00	Add: Addition during the year	1,25,646.00	
UGC CAPITAL GRANT:APLB/SHEET	1,40,13,156.57	1,46,72,489.57	UGC DEV ASSISTANCE:APLB/S	48,04,130.84	72,44,250.84
Add: Addition during the year (UGC)	6,59,333.00		Add: Addition during the year	24,40,120.00	
SHRI GANAPATI PAI MEMORABLE FUND		5,11,124.89	INVESTMENTS FD WITH BANKS:		1,57,04,829.71
			BAL/APLB/SHEET	1,39,81,225.71	
			Add: Addition during the year	17,23,604.00	75,945.00
			DEPOSIT:APLB/SHEET	49,445.00	
			Add: KU Affiliation Deposit	26,500.00	80,732.48
			SUNDRY ASSETS:APLB/SHEET		
			T.D.S (12-13)		74,720.00
			ADVANCES:APLB/SHEET	4,93,011.62	3,67,427.62
			Less: Payable	(1,25,584.00)	
			CASH & BANK BALANCE		1,16,88,430.58
			Cash in Hand	65,969.34	
			Balance with Banks	1,16,22,461.24	81,44,003.27
			INCOME AND EXPENDITURE A/C		
			APL/BSHEET	76,28,064.46	
			Deficit for the Year	5,15,938.81	
TOTAL RS.		11,39,90,817.22	TOTAL RS.		11,39,90,817.22

KARWAR  
June 29, 2013



*[Signature]*  
CHAIRMAN/ TRUSTEE  
(KANARA WELFARE TRUST)



As Per Separate Report of Even Date

*[Signature]*  
U. K. ANVEKAR  
CHARTERED ACCOUNTANT

**BALANCE SHEET of the year 2013-2014**

**KANARA WELFARE TRUST**  
**G. C. COLLEGE CAMPUS, N. H. 17 - ANKOLA - 581314**

**BALANCE SHEET AS AT 31ST MARCH 2014**

LIAIBILITIES	AMOUNT	ASSETS	AMOUNT
TRUST FUND:APLB/SHEET	4,20,25,626.65	ASSETS & PROPERTIES:	
CAPITAL DONATION:APLB/SHEET	2,31,96,585.71	BAL/APLB/SHEET	5,86,67,163.33
ENDOWMENT DONATION:APLB/SHEET	33,267.25	Add: Addition during the year	40,71,737.00
GENERAL WELFARE FUND	1,00,000.00		6,27,38,900.33
DEVELOPMENT & MAINT. FUND:APLBS	1,21,61,986.75	COMPUTERS:APLB/SHEET	35,09,326.35
Add: Addition During the year	75,23,398.00	Add: Addition during the year	3,19,984.00
	1,96,85,384.75		38,29,310.35
RESERVE FUND:APLB/SHEET	4,17,174.14	DEAD STOCK:APLB/SHEET	31,19,885.04
RUPEE RESERVE FUND:APLB/SHEET	1,52,79,656.76	Add: Addition during the year	99,348.00
Add: Addition during the year	19,53,270.00		32,19,233.04
	1,72,32,926.76	FURN. & EQUIPMENT:APLB/SHEET	50,60,033.00
GOLDEN JUBILEE FUND:APLB/SHEET	50,88,975.50	Add: Addition during the year	1,17,489.00
SILVER JUBILEE FUND:APLB/SHEET	5,03,930.00		51,77,522.00
UGC CAPITAL GRANT:APLB/SHEET	1,46,72,489.57	BOOKS:APLB/SHEET	2,54,070.00
Add: Addition during the year (UGC)	89,10,416.00	Add: Addition during the year	71,056.00
	2,35,82,905.57		3,25,126.00
SHRI GANAPATI PAI MEMORABLE FUND	5,11,124.89	UGC DEV ASSISTANCE:APLB/S	72,44,250.84
DIAMAND JUBILEE FUND	11,83,026.00	Add: Addition during the year	
		UGC Cap Exp	10,74,818.00
		UGC Computer	5,97,214.00
		UGC Equip	1,14,202.00
		UGC Other cap. Exp	7,40,750.00
			97,71,234.84
		INVESTMENTS FD WITH BANKS:	
		BAL/APLB/SHEET	1,57,04,829.71
		Add: Addition during the year	24,43,629.74
			1,81,48,459.45
		DEPOSIT:APLB/SHEET	75,945.00
		Add: KU Affiliation Deposit	-
			75,945.00
		SUNDRY ASSETS:APLB/SHEET	80,732.48
		T.D.S (12-13)	74,720.00
		Add: Addition (13-14)	70,849.00
			1,45,569.00
		ADVANCES:APLB/SHEET	3,67,427.62
		Add: Addition	3,98,957.00
			7,66,384.62
		CASH & BANK BALANCE	
		Cash in Hand	59,281.16
		Balance with Banks	2,05,01,564.19
			2,05,60,845.35
		INCOME AND EXPENDITURE A/C	
		APL/BSHEET	81,44,003.27
		Deficit for the Year	5,77,661.49
			87,21,664.76
<b>TOTAL RS.</b>	<b>13,35,60,927.22</b>	<b>TOTAL RS.</b>	<b>13,35,60,927.22</b>

As Per Separate Report of Even Date

KARWAR  
June 30, 2014

*[Signature]*  
 CHAIRMAN/ TRUSTEE  
 (KANARA WELFARE TRUST)



*[Signature]*  
 U. K. ANVEKAR  
 CHARTERED ACCOUNTANT



**KANARA WELFARE TRUST**

**Gokhale Centenary College Campus, N.H.-17,**

**Ankola, Uttar Kannada, Karnataka – 581314**

**Phone: 08388-230493**

**Email: [kwtankola@gmail.com](mailto:kwtankola@gmail.com)**

**Website: [www.kwtankola.com](http://www.kwtankola.com)**

**OFFICE STAFF OF KANARA WELFARE TRUST**



**PRASHANT N RAO**  
Special Coordinator



**RAJU G NAIK**  
Office Assistant



**MEENAXI M NAIK**  
Clerk



## HEADS OF THE INSTITUTIONS RUN BY THE TRUST as on May 2014



**Shri V.R.Kamat**  
Gokhale Centenary College  
Ankola



**Dr. M.H.Naik**  
Divekar College Of Commerce  
& KWT BCA College, Karwar



**Dr. Jayashree V.Korati**  
KWT's College of Education  
Dandeli



**Shri M.S.Lamani**  
Janata Vidyalaya Comp. Jr.  
College, Dandeli



**Shri Bhimraj R.**  
Janata Vidyalaya Comp. Jr.  
College, Kaditoka



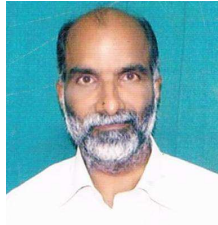
**Shri A.B.Ramrath**  
Janata Vidyalaya Comp. Jr.  
College, Shirali



**Shri Phalgun C.Gouda**  
P.M. Comp. Jr. College  
Ankola



**Shri Ravindra V.Keni**  
People's Multipurpose  
High School, Ankola



**Shri S.N.Nayak**  
Janata Vidyalaya,  
Baad-Kagal



**Smt. Savitri Naik**  
Janata Vidyalaya,  
Shirali



**Smt. Haleema Bhukhari**  
Janata Vidyalaya  
Dandeli



**Shri S.G.Shereggar**  
Janata Vidyalaya  
Kadwad



**Smt. Nagaratna Nayak**  
Janata Vidyalaya  
Kasarkod



**Shri Sandesh Ullikashi**  
Janata Vidyalaya  
Murdeswar



**Smt. Usha N.Nayak**  
Janata Vidyalaya  
Mirjan-Kodkani



**Smt. Usha G.Bhat**  
Janata Vidyalaya  
Kaditoka



**Shri A.R.Kondli**  
Janata Vidyalaya  
Mudga



**Smt. Laxmi Kasmadi**  
Janata Vidyalaya  
Dhadeshwar



**Shri F.B.Talwar**  
Janata Vidyalaya  
Bedkani



**Shri I.V.Hebbar**  
S.K.P.High School  
Katgal



**Shri K.G.Hulswar**  
Janata Vidyalaya  
Anilgod



**Shri T.D.Lamani**  
Janata Vidyalaya  
Kulve-Baroor



**Smt. Archana Naik**  
P.M. Eng. Med. High  
School, Ankola



**Smt. Anusuya Revankar**  
English Medium Primary  
School, Dandeli



**Smt. Nandini M.Naik**  
Kannada Medium  
Primary School, Dandeli



**Shri Subhash K Naik**  
Dr. Dinkar Desai Primary  
School, Ankola



**Shri Jagadish Gunaga**  
Dinkar Primary School,  
Dhadeshwar



# CHOICE IS YOURS! DO YOU WANT YOUR EARTH TO SURVIVE OR DIE?

DO YOU WANT THIS?



OR THIS?



WHEN WILL THESE THINGS DEGRADE?

Styrofoam - Eternity	Wood - 10-15 years
Glass Bottle - Unknown	Wool Socks - 1 year
Aluminum Can - 200-500 years	Cotton Rag - 5 months
Tin Can - 50-100 years	Paper Bag - 1 month
Leather Shoe - 40-50 years	Banana Peel - 3 weeks
<b>Plastic Bag will take 1 Million Years to degrade</b>	

**Plastic Is Harmful To Humans As Well As Animals!**



**DO NOT MAKE A MISTAKE NOW!  
YOU WILL NOT GET A CHANCE  
AGAIN TO CORRECT!**



**SAY NO TO PLASTIC NOW !!**

Issued in Public Interest by **KRUGER**  
Foundation for Child Aid



& **kanara welfare trust**  
knowledge alone can liberate you